

HEMS One – Changing PM Frequency

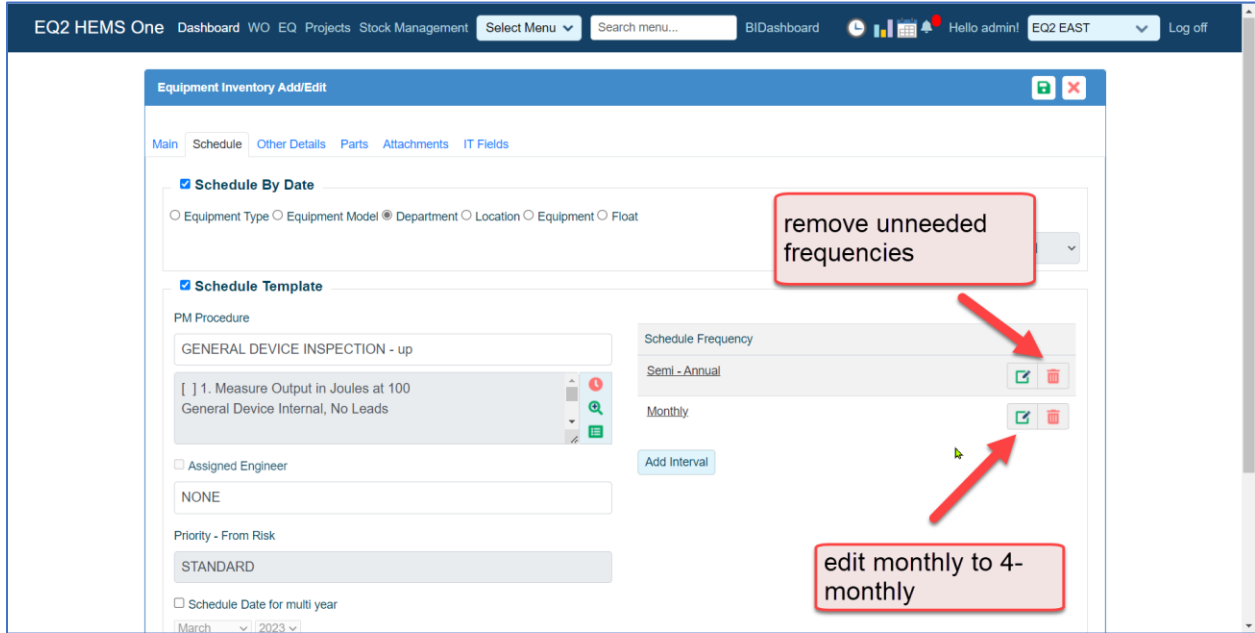


Figure 1 From the Schedule tab of the equipment inventory module, delete unnecessary frequencies and edit the monthly to 4-monthly in this example. You may delete all frequencies and Add Interval to insert a new 4-monthly frequency.

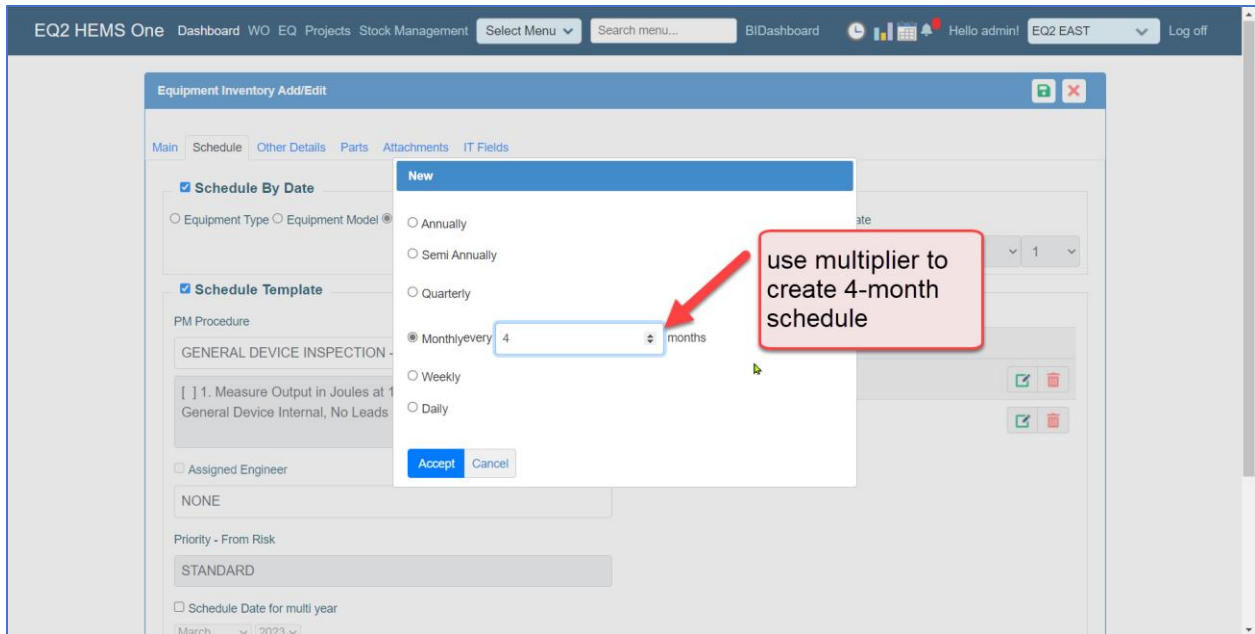


Figure 2 Enter the 4 times multiplier to monthly to obtain 4-monthly interval and click accept when finished.

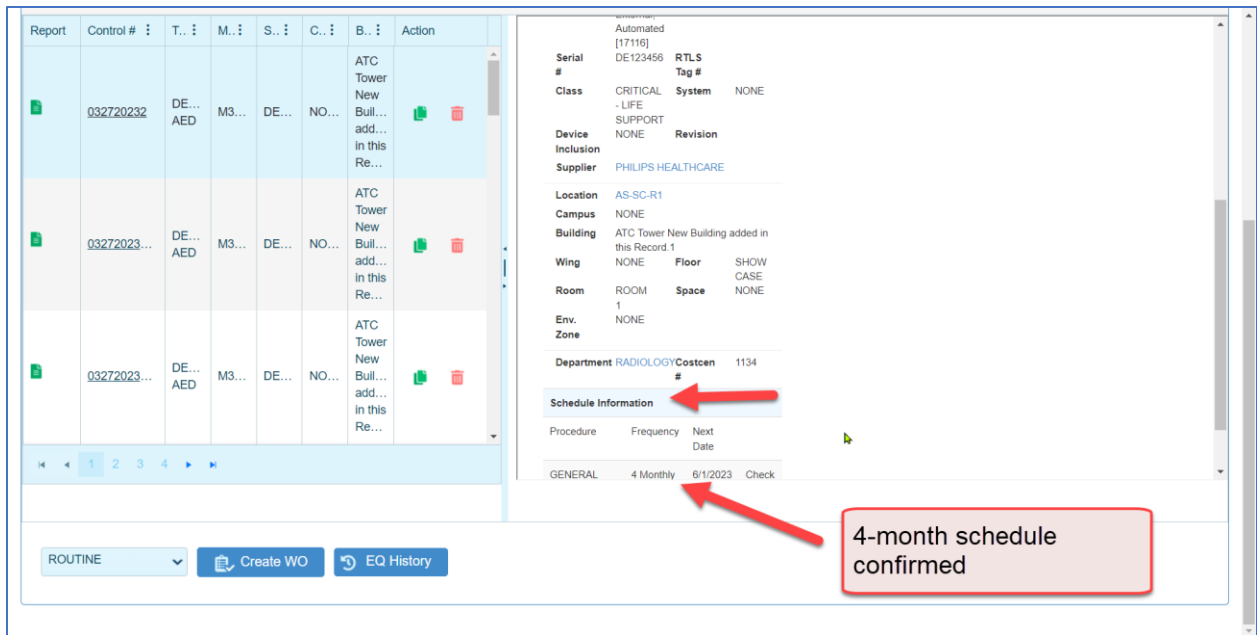


Figure 3 The Dashboard confirms the 4-monthly interval after saving the record.

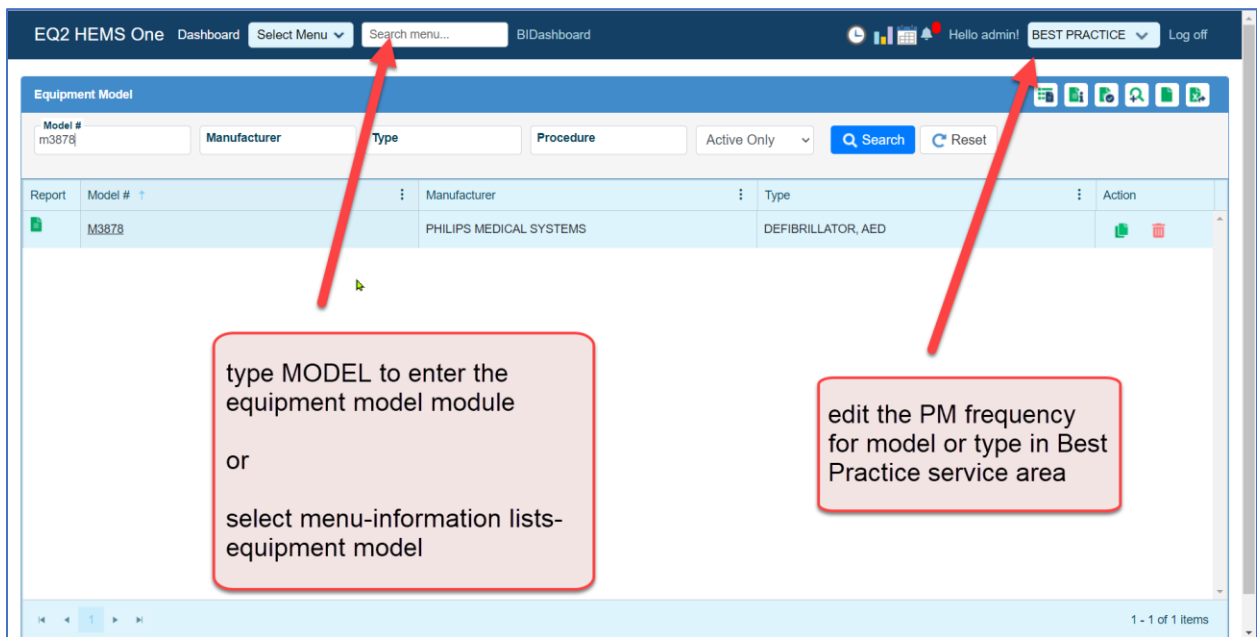


Figure 4 Enter the Best Practice service area to edit the PM frequency of a model or equipment type to a 4-monthly interval.

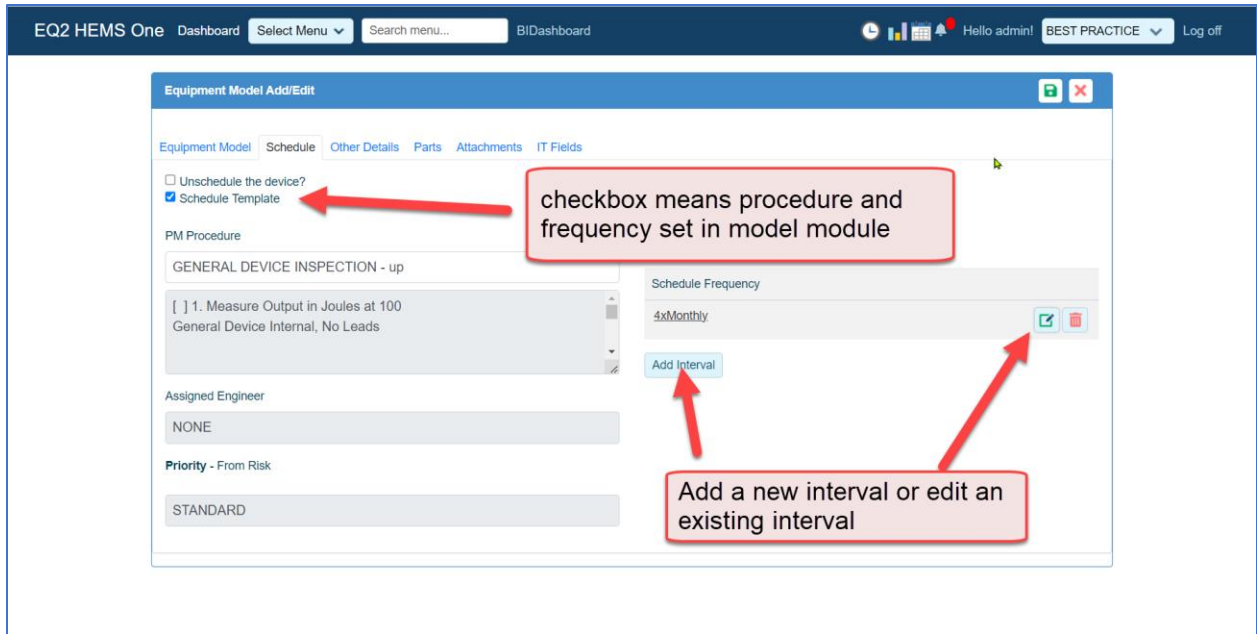


Figure 5 In models, click the Schedule Template so the model procedure and interval are assigned and use the edit/delete/Add Interval icons to program your new 4-monthly interval.

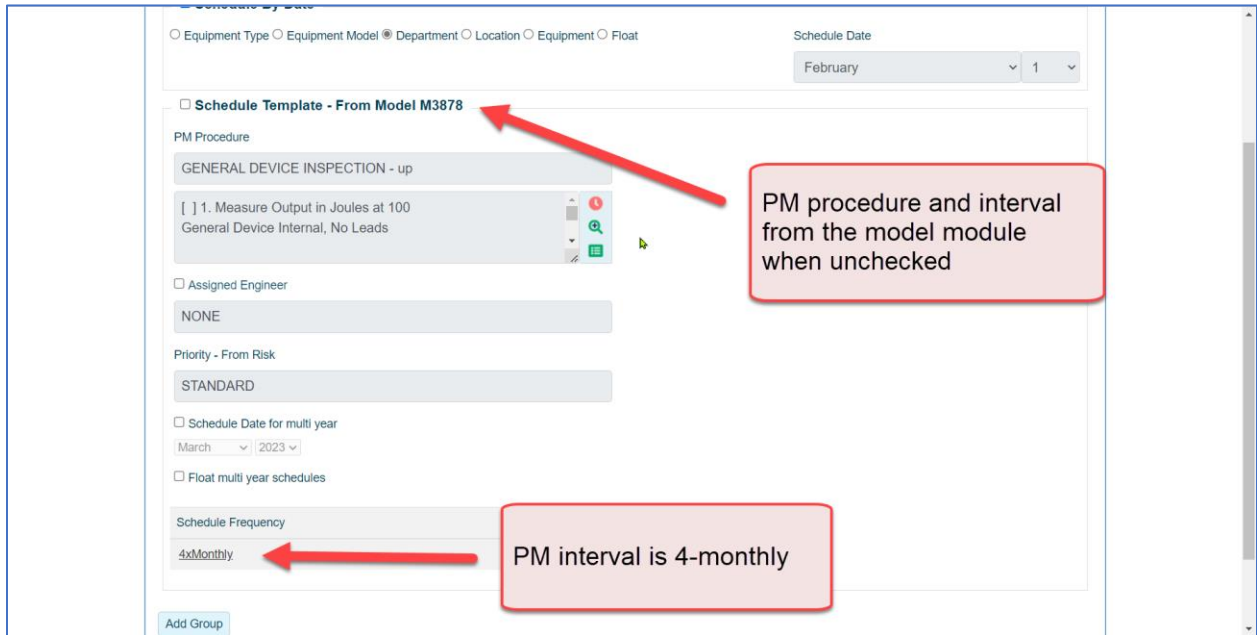


Figure 6 In the equipment inventory, uncheck the Schedule Frequency so the model frequency and procedure are applied to the asset, and you can see the 4 x monthly in the lower-left corner.