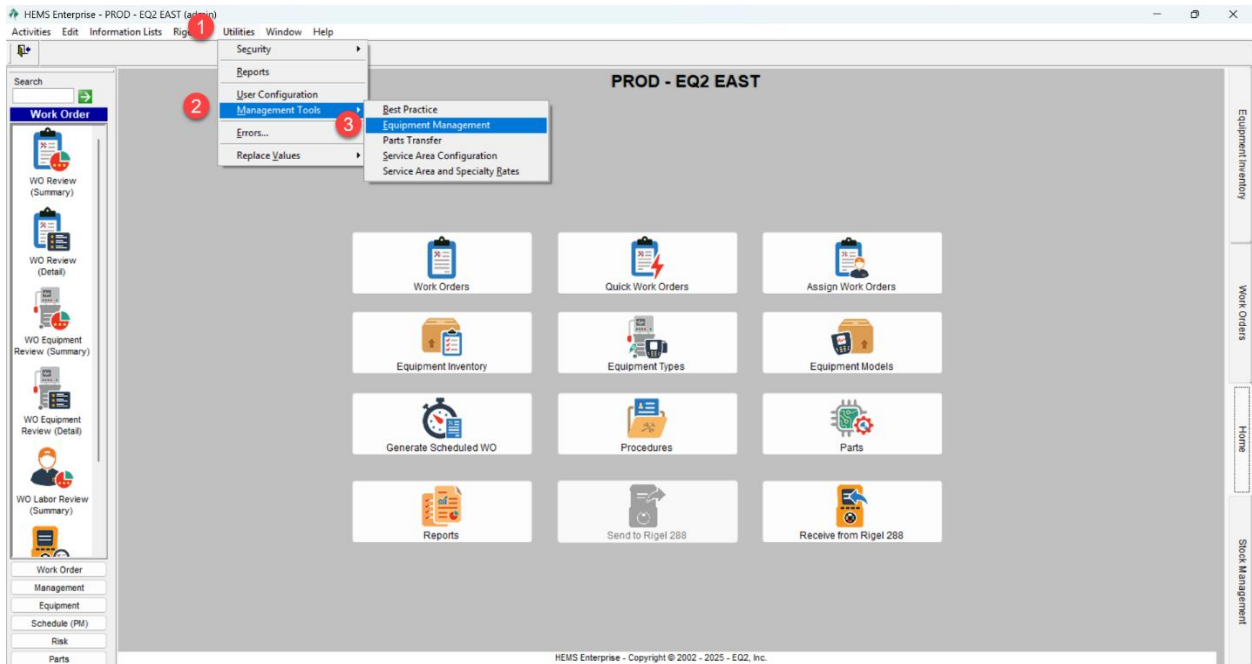


HEMS Enterprise – Equipment Management Module for Bulk Schedule Changes

You can use the Equipment Management module in HEMS to make bulk inventory adjustments like changing PM schedules.

Utilities-Management Tools-Equipment Management to launch the module.



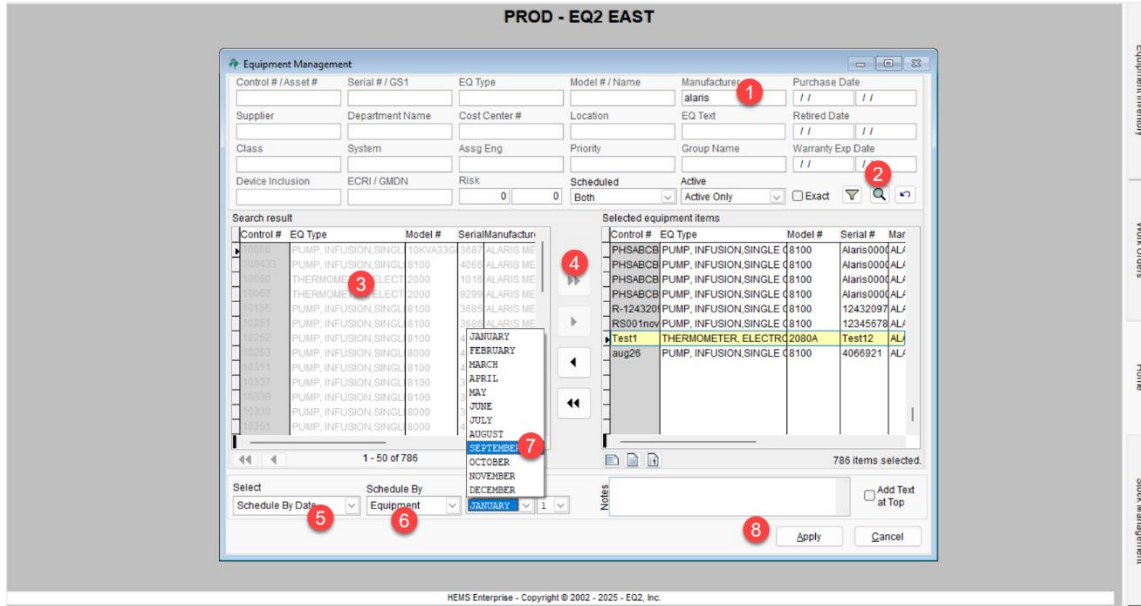
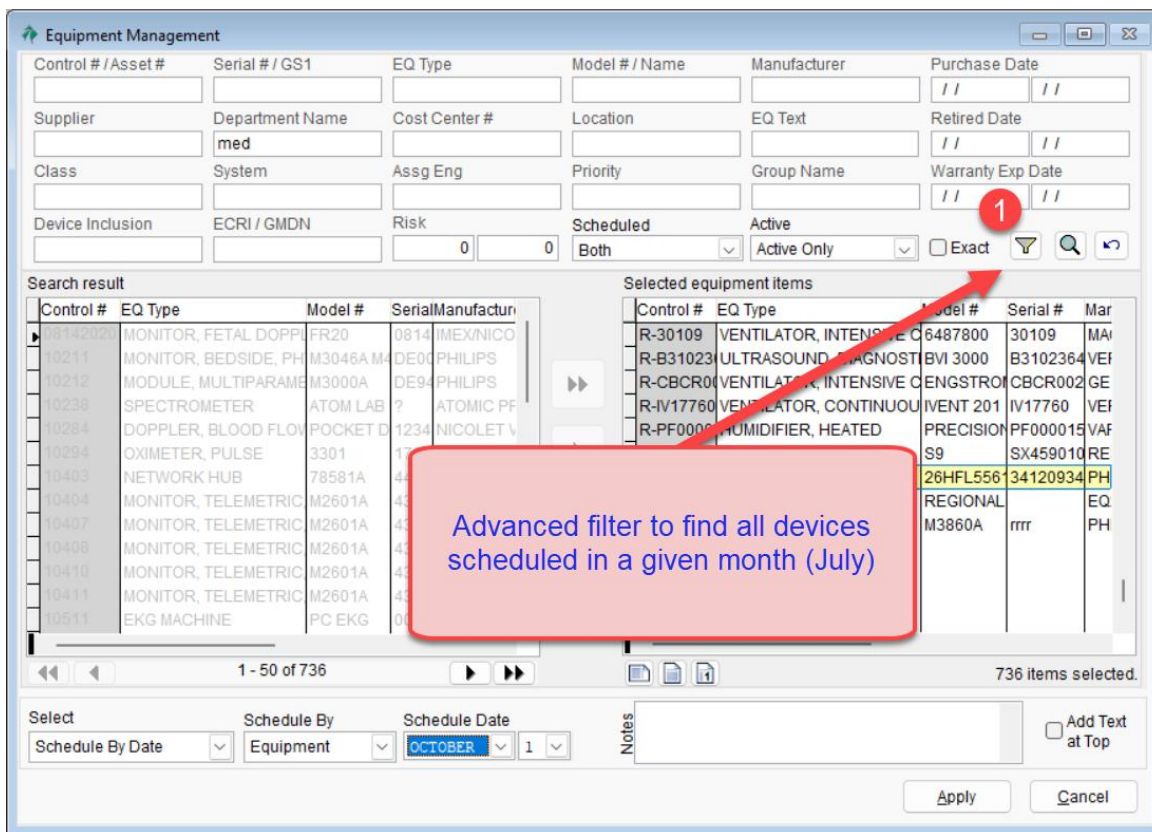


Figure 1 This example finds all equipment by Alaris (demo system), how to move it to selected (4), enable schedule by date (5), set by equipment (6), and set to September (7). Click APPLY to set the new schedule month.



Equipment Management

Filter Condition

2 Click to return to default search fields

1

Search result

Control #	EQ Type	Model #	Serial #	Manufacturer
con852	UNINTERRUPTABLE PO	1000	ser15	AMERICAN
00-01450	CAMERA, VIDEO	TVC-5100-	8504	KOYO ELE
0000 BLAN	TELEVISION	NONE	7108	TELEHEAL
000000-00	LARYNGOSCOPES, RIGI	GLIDESCO	3579	VERATHOR
000000-00	DEFIBRILLATORS, EXTE	LIFEPAK 9	2468	PHYSIO-C
000013	CS300 Intra-Aortic Ballo	0998-00-30	ABC1	Datascope
000556	LIGHT SOURCE	NONE	5768	NONE
001001	TESTER, PRESSURE ME	0-30 PSIG	7868	WEKSLER
001002	AERATOR, ETO	eqmodel14	7868	3COM
001003	SPHYGMOMANOMETER,	0129-AAN-	7868	GE MEDIC
001004 UR	TABLE, PT	#2	000U	T WOOD:
00203571	COMPRESSOR PUMP	NONE	tetéu	NONE
007700	DEFIBRILLATORS, EXTE	LIFEPAK 9	4444	PHYSIO-C

Selected equipment items

Control #	EQ Type	Model #	Serial #	Mar			
R-30109	VENTILATOR, INTENSIVE C	648700	30109	MA			
R-B31023	ULTRASOUND, DIAGNOSTI	VI 3000	B3102364	VEI			
R-CBCR04	VENTILATOR, INTENSIVE	ENGSTRO	CBCR002	GE			
R-IV17760	VENTILATOR, CONTINUOU	IVENT 201	IV17760	VEI			
R-PF0000	HUMIDIFIER HEATED	PRECISION	PF000015	VAF			
R-SX4590	CPAP	S9	SX459010	RE			
			6HFL5561	34120934	PH		
			REGIONAL	13860A	rrrr	EQ	PH

120934 PH

1 - 50 of 11049

736 items selected.

Select Schedule By Date Equipment OCTOBER 1

Notes Add Text at Top

Apply Cancel

Click to build filter

Equipment Management

Filter Condition

1

2

3

4

Make this your first step to retrieve all active inventory

Filter Condition

Module: Equipment Inventory

Field: Active

Operator: is Yes

OK Cancel

Search result

Control #	EQ Type	Model #	Serial #	Mar			
con852	UNINTERRUPT		487800	30109	MA		
00-01450	CAMERA, VIDEO		VI 3000	B3102364	VEI		
0000 BLAN	TELEVISION		INGSTRO	CBCR002	GE		
000000-00	LARYNGOSCO		VENT 201	IV17760	VEI		
000000-00	DEFIBRILLATOR		PRECISION	PF000015	VAF		
000013	CS300 Intra-Aor		S9	SX459010	RE		
000556	LIGHT SOURCE		6HFL5561	34120934	PH		
001001	TESTER, PRES		REGIONAL	13860A	rrrr	EQ	PH
001002	AERATOR, ETO						
001003	SPHYGMOMAN						
001004 UR	TABLE, PT						
00203571	COMPRESSOR						
007700	DEFIBRILLATOR						

736 items selected.

Select Schedule By Date Equipment OCTOBER 1

Notes Add Text at Top

Apply Cancel

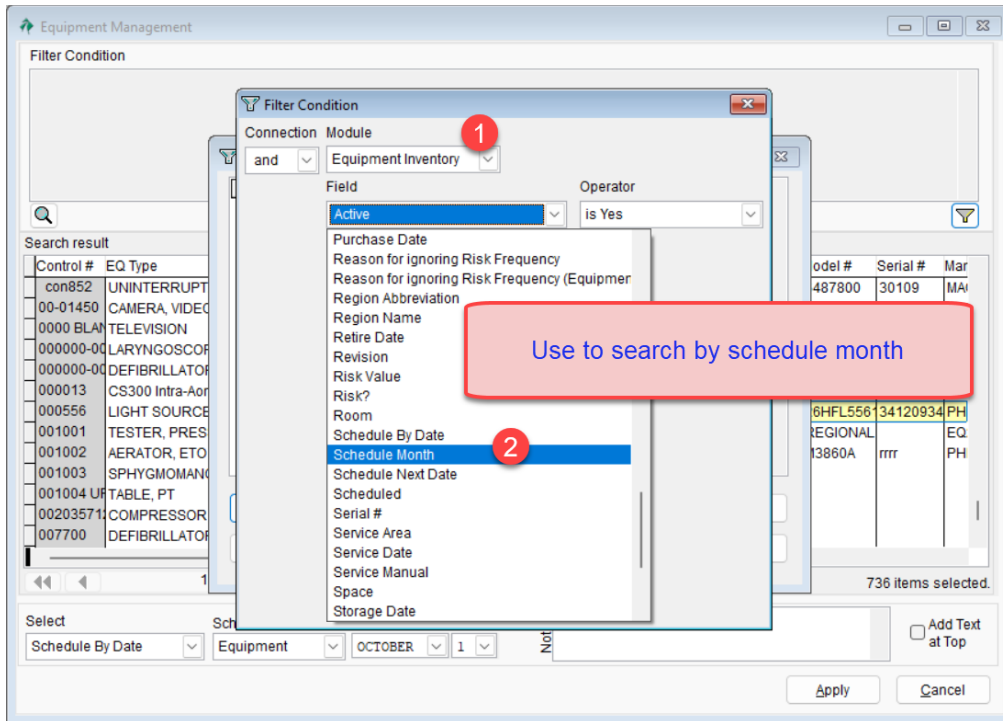
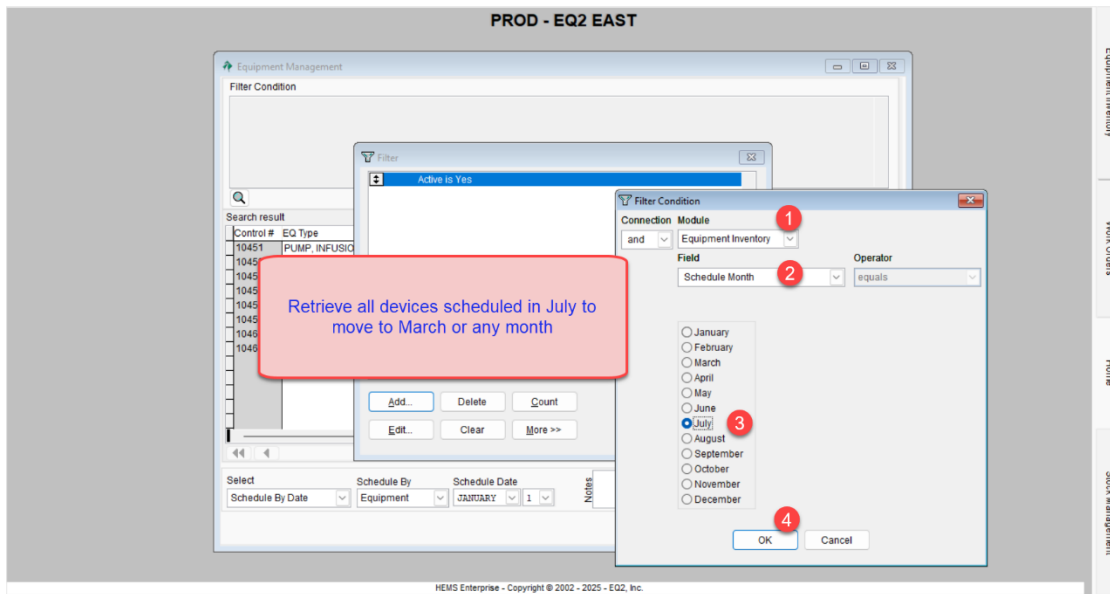


Figure ii Click ADD to further build your filter/query and click OK when finished. NOTE: Count should result in the number of devices and zero could mean a bad query or nothing matching your query.



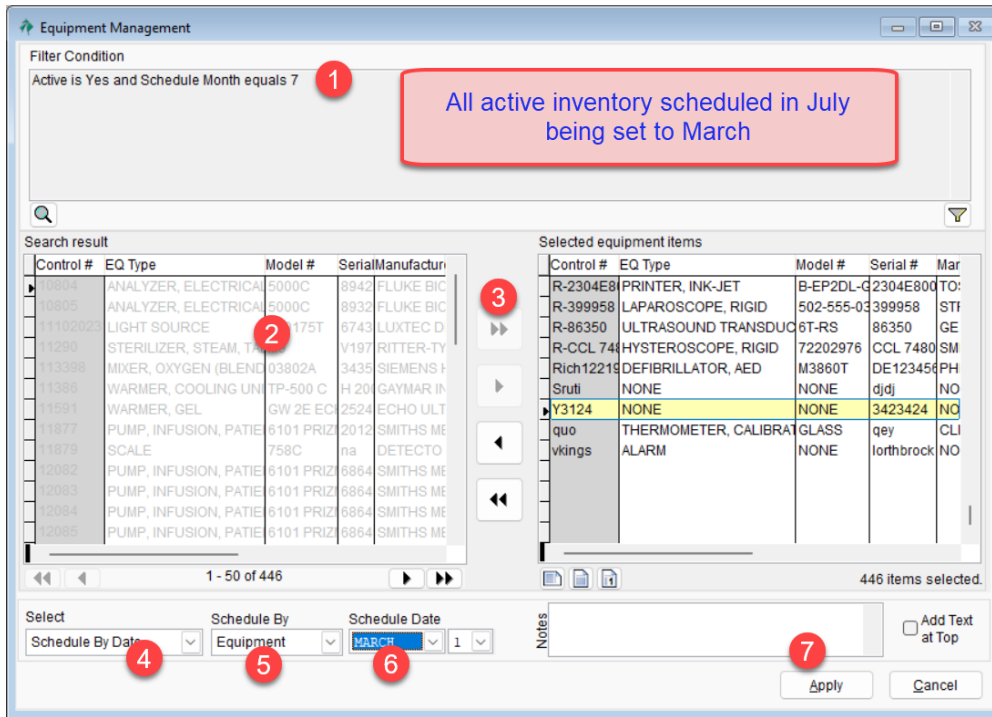


Figure iii (1) your query is displayed in the filter condition window. All inventory scheduled in July will now be scheduled in March.

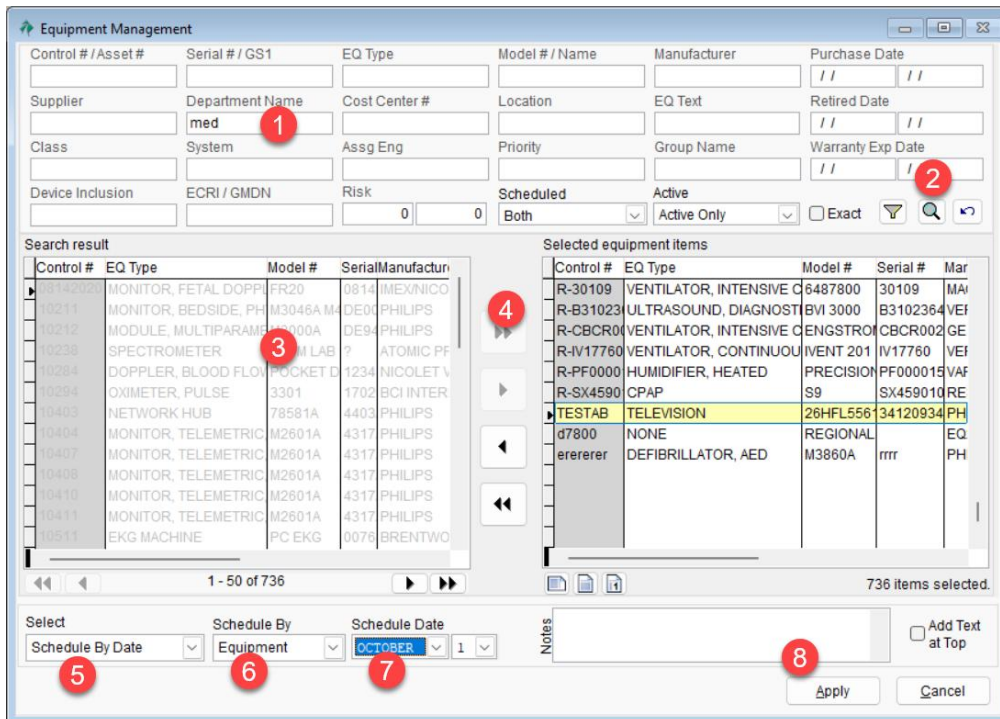


Figure iv Searching for all inventory in a department and rescheduling the PM month.